

MACHINES AND PROCESSES ONLINE

Cutting Edge technology for development of smarter industrial plants..

SAME DATA AND VIDEO IN

PC
Cell phone
Tablet

CONTINUOUS UPDATES

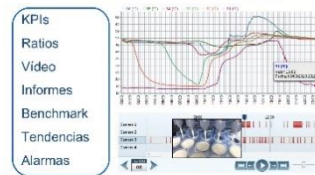
Software updates for the Support of new devices and versión of browsers.

Iprox FACTORY

Iprox Máquinas y procesos on-line



Análisis de datos - toma de decisiones



Máquinas y procesos on-line



Iprox Factory connects the physical world of machines and production with the virtual world of information. It is a Support tool for decision-making process. The information automatically collected throughout the plant is updated and displayed graphically – with the appropriate level of detail – in different locations

- At the foot of the machine to inform, notify punctually and make the operator responsible of it.
- On the production line to share the main indicators with the team.
- On the table, mobile and computer of maintenance personnel who receive notifications of stops and errores in a few seconds without human intervention.

By means of cameras strategically located, it allows the visualization of processes in real time – integrated in the dashboards as the numerical data – and, later, to analyze the recording to correlate their evolution of KPIs with the results. Data is collected by an Iprox controller through sensors – or read from the machines themselves – and sent via internet to the Iprox Factory platform.

Main Features

Receive, store, arrange and present the numerical data accompanied by graphics.

Control of the machines by authorized personnel remotely from the web app.

The administrator can define as many dashboards as needed in order to provide information to the team.

Avoid inefficiencies that cause cost overruns optimizing production processes.

Detection and automatic recording of incidents and sending alerts.

Analysis of historical data and video recordings allowing the detection problems the inefficiencies resulting in expenses.

Remote management of the facilities allowing the reduction of intervention times.

In energy intensive processes it is possible to impute the consumption of the same by product line, stage of the process, ton of final product, etc.

Improvement of decision-making.